

Air Wheel

201

Unit in mink colour leather effect laminated wood. On castors with all sides covered by 6mm tempered painted glass as per samples, in the bright or satin version. The inside is made of leather effect laminated wood in mink colour. Bright anodised aluminium metal parts. On request, version without castors, with mink colour leather effect laminated wooden plinth (total height 38 or 48 cm).

Cm (L x W x H)

AW 01 / AW 02 / AW 02X / AW 02R

136.4 x 51 x 56

166.4 x 51 x 56

AW U01 / AW U02 / AW U02R

91.4 x 51 x 56

121.4 x 51 x 56

AW U01S / AW U02S / AW U02RS

91.4 x 51 x 46

121.4 x 51 x 46

Inches (L x W x H)

AW 01 / AW 02 / AW 02X / AW 02R

53³/₄ x 20¹/₄ x 22¹/₄

65³/₄ x 20¹/₄ x 22¹/₄

AW U01 / AW U02 / AW U02R

36 x 20¹/₄ x 22¹/₄

48 x 20¹/₄ x 22¹/₄

AW U01S / AW U02S / AW U02RS

36 x 20¹/₄ x 18¹/₄

48 x 20¹/₄ x 18¹/₄



Finishings

Glass



Bright black



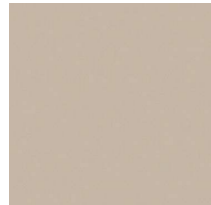
Bright blue-grey



Bright cadet blue



Bright cement



Bright champagne



Bright dark grey



Bright green-grey



Bright liquorice



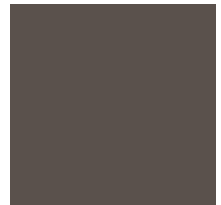
Bright mink



Bright olive



Bright rose powder



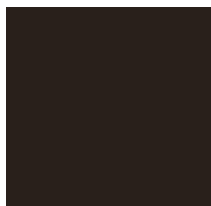
Bright taupe



Bright white



Leather effect laminated wood



Satin black



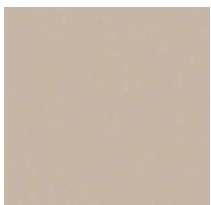
Satin blue-grey



Satin cadet blue



Satin cement



Satin champagne



Satin dark grey



Satin green-grey



Satin liquorice



Satin mink



Satin olive



Satin rose
powder



Satin taupe



Satin white

Metal



Anodised
aluminium