

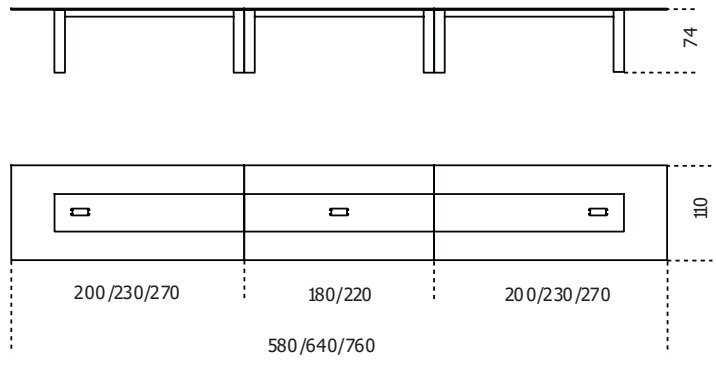
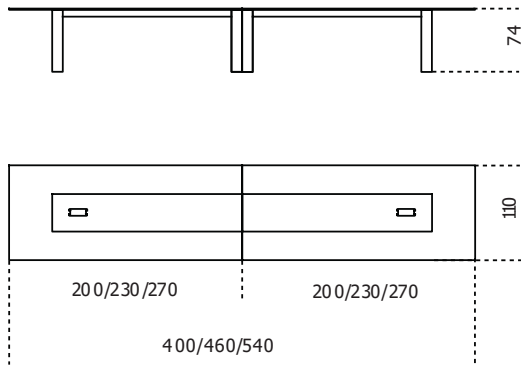


Dolm System

2012

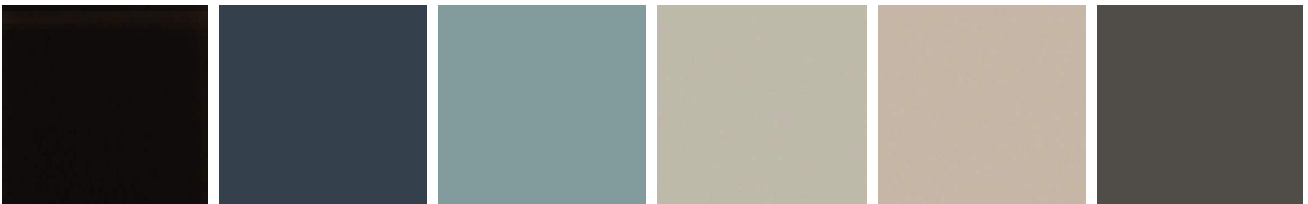
Modular system of tables with 15mm extralight glass tops, painted only in the middle part as per samples in the bright version. 45 alternated bevelled glass top. Also available in the version with not bevelled glass top. Wooden base covered by 6mm tempered bright painted glass as per samples. Customised compositions on request. Available with Cover Cable Plate 1 cable management, on request. Cover Cable Plate 1 is painted in the same colour of the glass top. The painting of the glass top in the middle part can only be done in the bright version.

Cm (L x W x H)	Inches (L x W x H)
400 x 110 x 74	157½ x 43½ x 29¼
460 x 110 x 74	181¼ x 43½ x 29¼
540 x 110 x 74	212¾ x 43½ x 29¼
580 x 110 x 74	228½ x 43½ x 29¼
640 x 110 x 74	252 x 43½ x 29¼
760 x 110 x 74	299¼ x 43½ x 29¼



Finishings

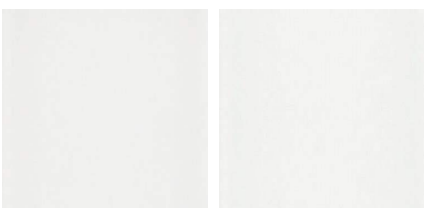
Glass



Bright black Bright blue-grey Bright cadet blue Bright cement Bright champagne Bright dark grey



Bright green-grey Bright liquorice Bright mink Bright olive Bright rose powder Bright taupe



Bright white Extralight