



Glass Pad

2009

Tempered satin painted glass writing pad as per samples.

Cm (L x W x H)

70 x 38 x 0.6

President Junior | 65 x 41 x 0.6

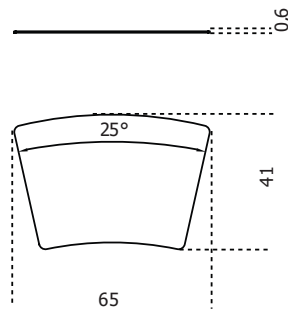
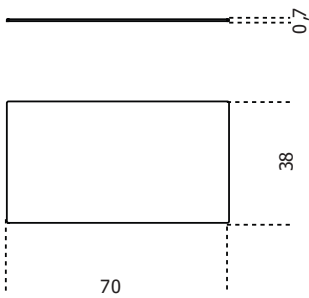
President Senior | 75 x 43 x 0.6

Inches (L x W x H)

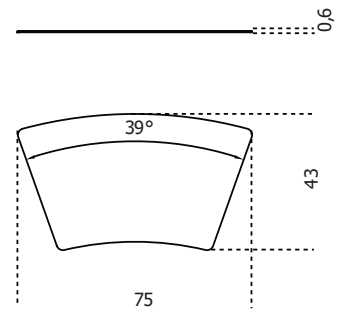
27³/₄ x 15 x 1/4

President Junior | 25³/₄ x 16¹/₄ x 1/4

President Senior | 29³/₄ x 17 x 1/4



President Junior



President Senior



Finishings

Glass



Satin black



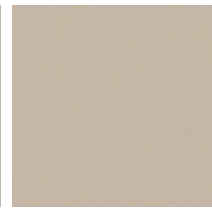
Satin blue-grey



Satin cadet blue



Satin cement



Satin
champagne



Satin dark grey



Satin green-grey



Satin liquorice



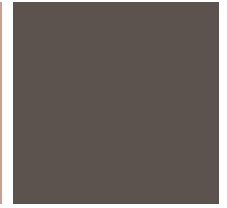
Satin mink



Satin olive



Satin rose
powder



Satin taupe



Satin white