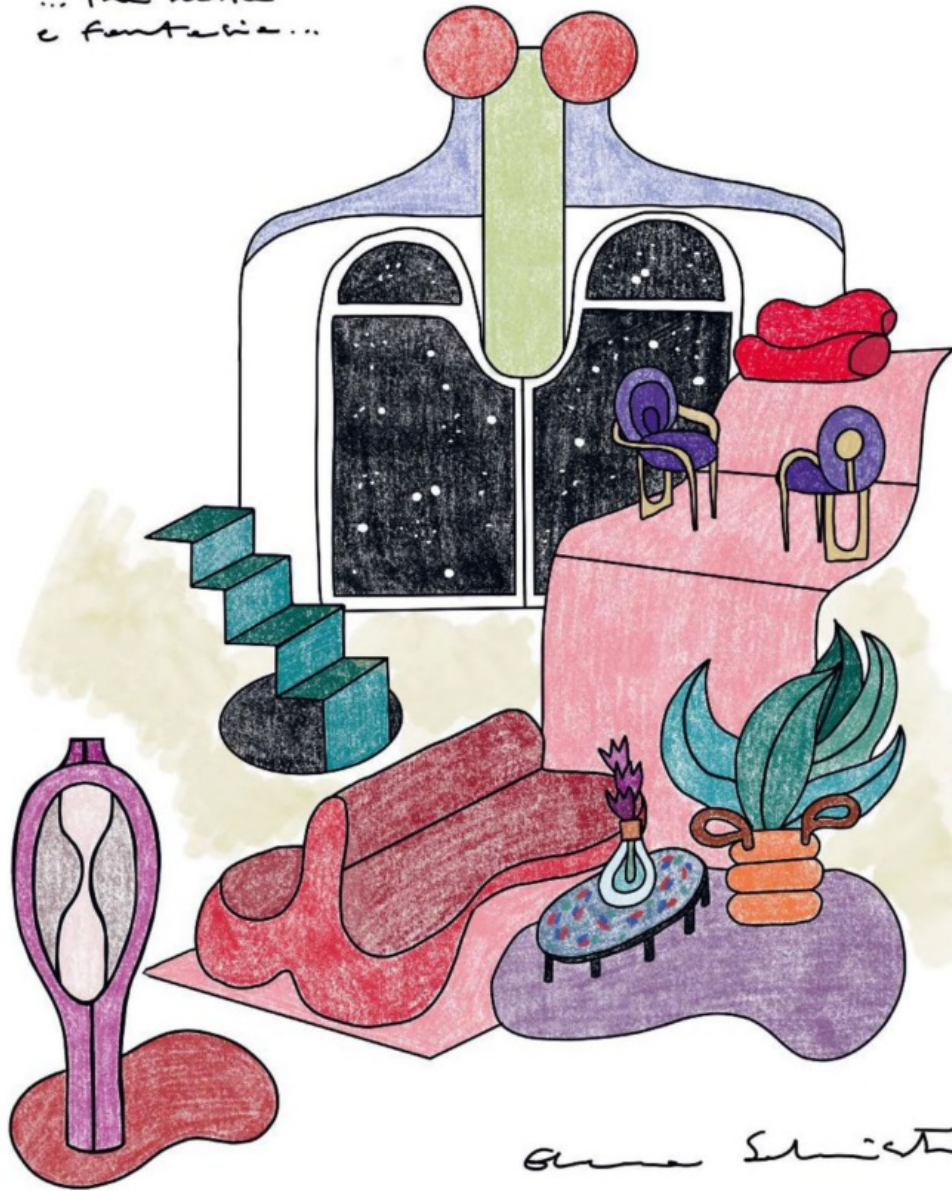


per interni
... the walls
& fantasia...



Anna Schuster





On the facing page: Audrey Motion by Massimo Castagna for **Gallotti&Radice**, a sofa with curved modules and an internal structure in wood; padding in variable-density non-deformable expanded polyurethane. The base is in black lacquered wood, the covering in fabric or leather in the catalogue colors. Pod Privacy Chair by Benjamin Hubert for **De Vorm**, produced with a unique PET Felt pressing technique. Up to 600 PET bottles are recycled to produce a Pod, originally only available in two colours. Now the chair is fully customisable: designers can choose from 11 PET Felt blends for the shell, hundreds of RAL colours for the frame and Kvadrat fabrics for the upholstery. A sinuous back based on a game of overlaps sets the tone of the Hémicycle chair by Philippe Nigro for **Ligne Roset**, in partnership with Mobilier National. It has feet in black coated metal and covering in leather or fabric. On this page: Trampoline modular outdoor sofa by Patricia Urquiola for **Cassina**. Besides its organic forms and back woven by hand in polypropylene and nylon cord, this piece stands out for the use of innovative and sustainable materials developed by Cassina LAB, the collaboration between the company's Research and Development division and Poli design of the Milan Polytechnic. Trampoline is covered in Futura fabric, produced as an exclusive by Reviva, in polyester yarn made with 100% recycled PET. Lilia swivel chair, designed by Steve Leung for **Flou**, featuring an organic, asymmetrical form resembling the corolla of a flower. Covered in fabric or leather, with the option of differentiation of the inner and outer surfaces of the seat.