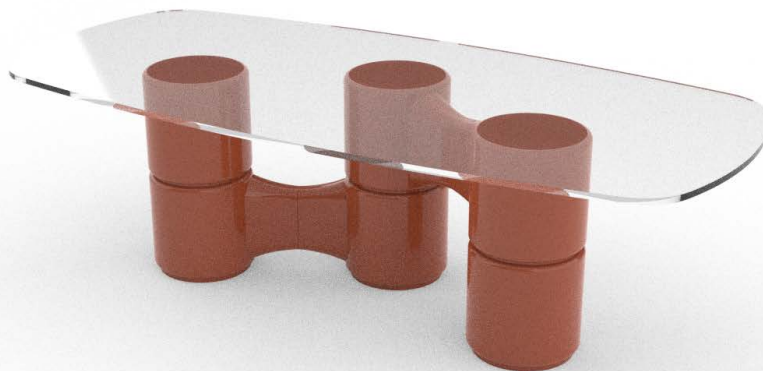


# Molecola

Massimo Castagna  
2024



Tavolo con piano in cristallo trasparente temperato 15mm.  
Base formata da cilindri in legno spatolati a mano.  
Disponibile nei colori mattone, corda, carbone o avorio.

## Dimensioni / size

Cm (Ø x H)

180 x 74.5

200 x 74.5

Cm (L x P x H)

240 x 150 x 74.5

260 x 150 x 74.5

300 x 150 x 74.5

320 x 150 x 74.5

## Dimensioni / size

Inches (Ø x H)

71 x 29½

78¾ x 29½

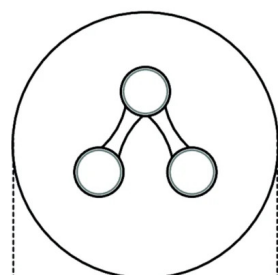
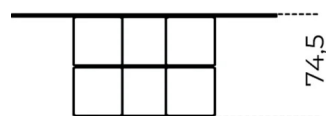
Inches (L x P x H)

94½ x 59¼ x 29½

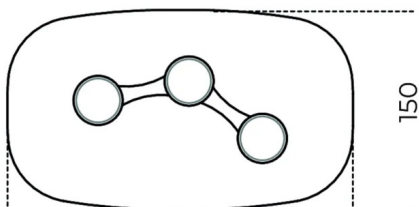
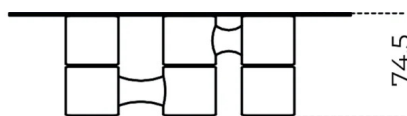
102½ x 59¼ x 29½

118¾ x 59¼ x 29½

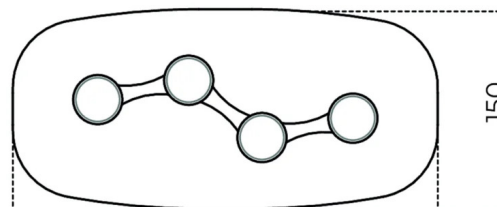
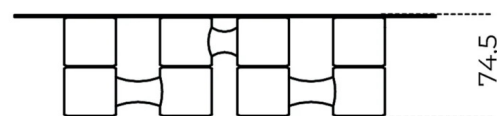
126 x 59¼ x 29½



Ø180/200



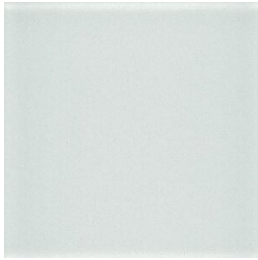
240/260



300/320

# Finiture

## Cristallo

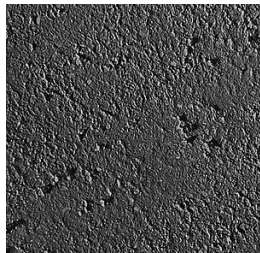


Trasparente

## Legno spatolato



Avorio



Carbone



Corda



Mattone