

Molecola

Massimo Castagna
2024

Tavolo con piano in cristallo trasparente temperato 15mm.
Base formata da cilindri in legno spatolati a mano.
Disponibile nei colori mattone, corda, carbone o avorio.

Dimensioni / size

Cm (Ø x H)

180 x 74.5

200 x 74.5

Cm (L x P x H)

240 x 150 x 74.5

260 x 150 x 74.5

300 x 150 x 74.5

320 x 150 x 74.5

Dimensioni / size

Inches (Ø x H)

71 x 29½

78¾ x 29½

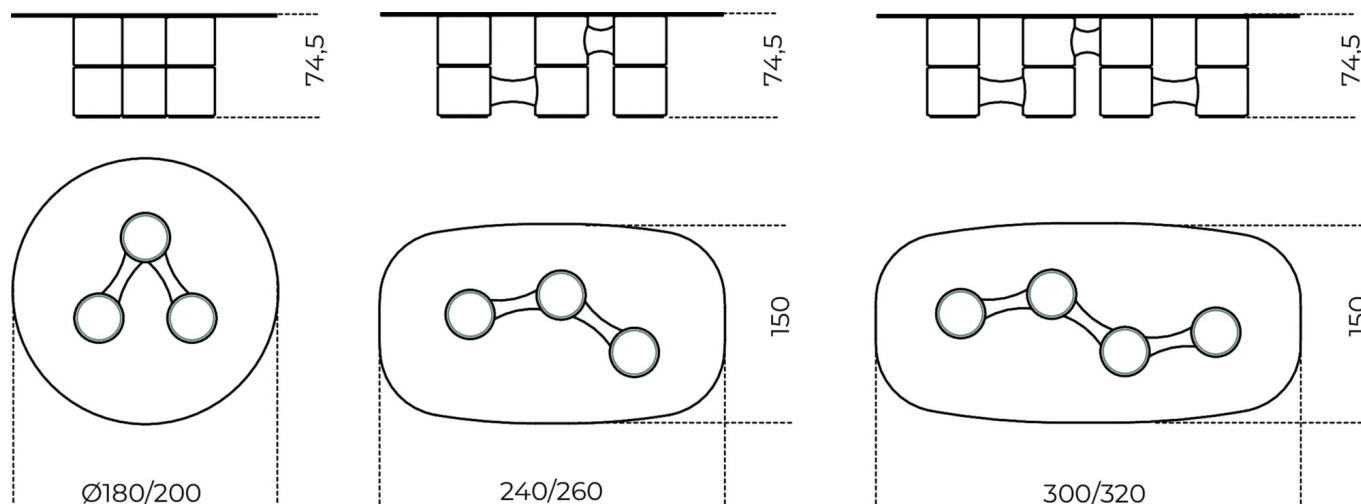
Inches (L x P x H)

94½ x 59¼ x 29½

102½ x 59¼ x 29½

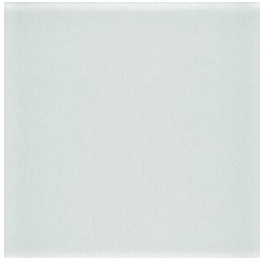
118¾ x 59¼ x 29½

126 x 59¼ x 29½



Finiture

Cristallo

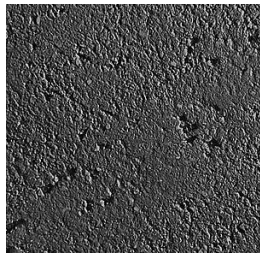


Trasparente

Legno spatolato



Avorio



Carbone



Corda



Mattone