

# Nox

Ricardo Bello Dias

2009



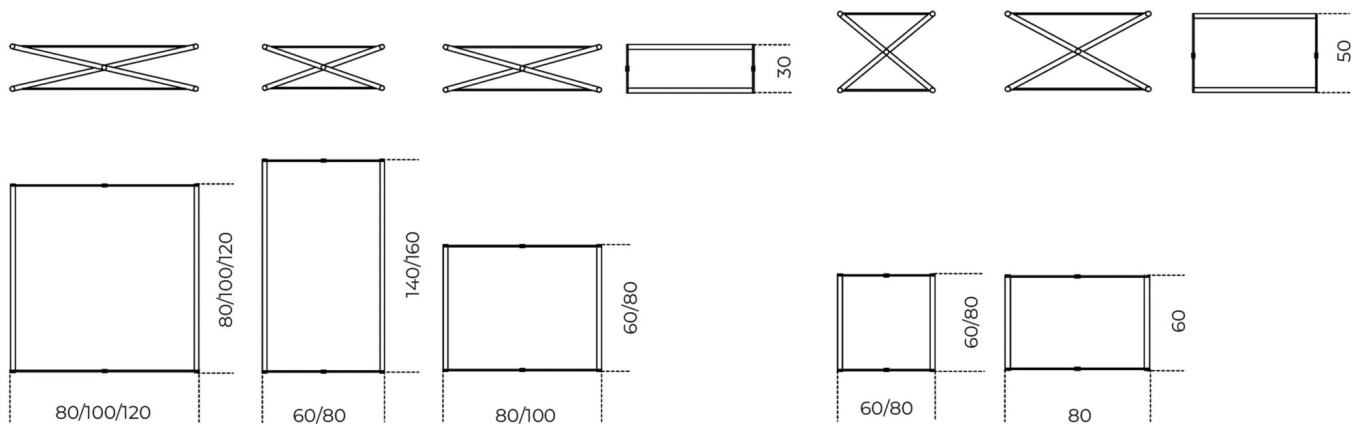
Coffee table in 8mm tempered glass. Transparent glass top. Painted glass bottom as per samples in the bright or satin version. Stainless steel or burnished lacquered metal structure with whitened oak, wengé stained, tobacco stained or black open pore lacquered wooden parts.

## Cm (L x P x H)

80 x 60 x 30  
 80 x 80 x 30  
 100 x 60 x 30  
 100 x 80 x 30  
 100 x 100 x 30  
 60 x 60 x 50  
 80 x 60 x 50  
 80 x 80 x 50  
 120 x 120 x 30  
 80 x 140 x 30  
 60 x 160 x 30

## Inches (L x P x H)

31½ x 23¾ x 12  
 31½ x 31½ x 12  
 39½ x 23¾ x 12  
 39½ x 31½ x 12  
 39½ x 39½ x 12  
 23¾ x 23¾ x 19¾  
 31½ x 23¾ x 19¾  
 31½ x 31½ x 19¾  
 47¼ x 47¼ x 12  
 31½ x 55¼ x 12  
 23¾ x 63 x 12



# Finishes

## Glass



Bright white



Satin white



Bright blue-grey



Satin blue-grey



Bright cadet blue



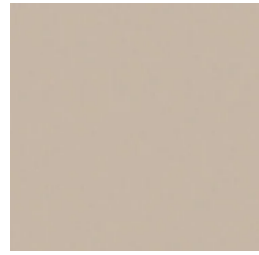
Satin cadet blue



Bright cement



Satin cement



Bright champagne



Satin champagne



Bright rose powder



Satin rose powder



Bright taupe



Satin taupe



Bright dark grey



Satin dark grey



Bright liquorice



Satin liquorice



Bright black



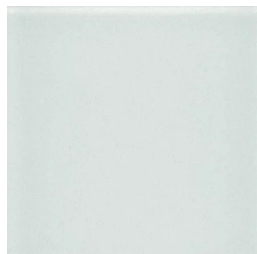
Satin black



Bright olive



Satin olive



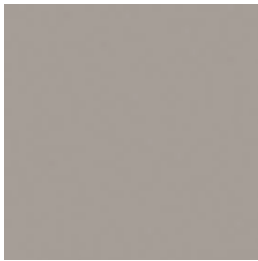
Transparent



Bright green-grey



Satin green-grey



Bright mink



Satin mink

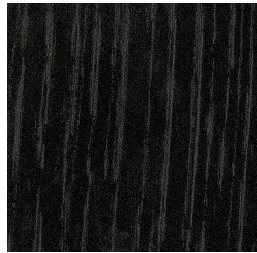
## Wood



Whitened oak



Tobacco stained oak



Wengè stained ash

## Wood



Black open pore

## Metal



Bright stainless steel



Burnished lacquered