
Re-verre

Federica Biasi

2024



Tavolino monomaterico in vetro riciclato disponibile nella finitura "melange terre" (arancio "terre cuite", marrone "noisette" e marrone "chocolat") con basamento marrone "chocolat" o "melange lunaire" (bianco "blanc", beige "sable" e grigio "roche") con basamento grigio "roche".

Disponibile versione monocromatica grigio "roche" o marrone "chocolat".

Trattandosi di una lavorazione artigianale e manuale le misure sono indicative e la superficie potrebbe essere porosa e non essere completamente planare.

Dimensioni / size

Cm (Ø x H)

50 x50

60 x47

90 x37

120 x27

Dimensioni / size

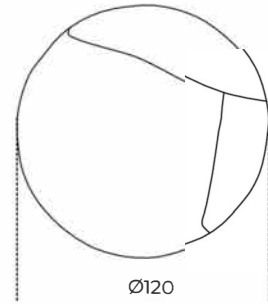
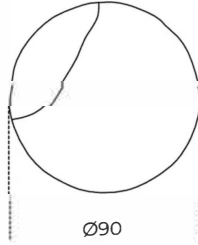
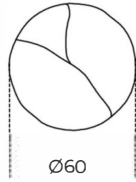
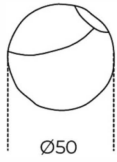
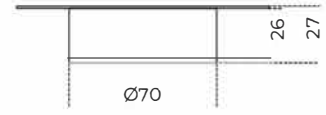
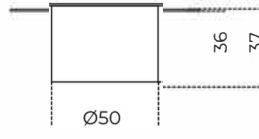
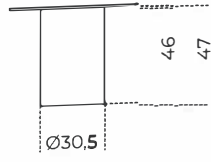
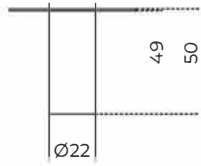
Inches (Ø x H)

19¾ x 19¾

23¾ x 18¾

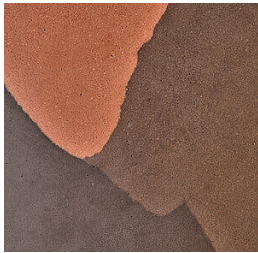
35½ x 14¾

47¾ x 10¾



Finiture

Vetro riciclato



"Melange terre"



"Melange lunaire"