
Stresa

Dainelli Studio
2025



Shelf with boiserie in black stained open pore, tobacco stained open pore or "Pure" white stained open pore wood. Panel to be fixed to the wall.

Wooden shelf covered by fard leather as per samples.

Available positioned in the upper or lower part of the panel, to be specified when ordering.

Opaque opaline glass lamp diam. 35 positioned on the shelf. (bulb E27 supplied).

Available right or left version to be specified when ordering.

Light activated by a touch sensor positioned under the shelf.

Satin nickel metal profiles and sphere support.

Also available version without lamp with shelf positioned in the upper or lower part of the panel, to be specified when ordering.

Available in the combinations listed.

Cm (L x P x H)

180 x 46.2 x 87.4

220 x 46.2 x 87.4

180 x 46.2 x 62.4

220 x 46.2 x 62.4

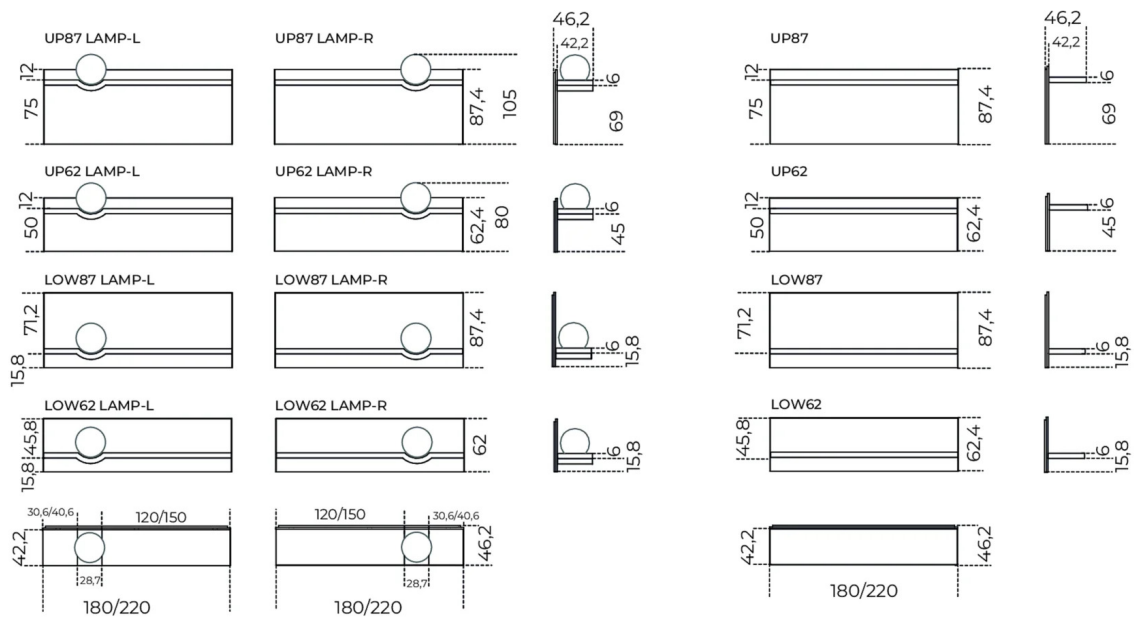
Inches (L x P x H)

71 x 18³/₄ x 34¹/₂

86³/₄ x 18³/₄ x 34¹/₂

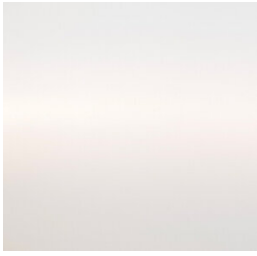
71 x 18³/₄ x 24³/₄

86³/₄ x 18³/₄ x 24³/₄



Finishes

Glass



Opal glass

Wood



Black stained open pore
ash



"Pure" white open pore
stained ash



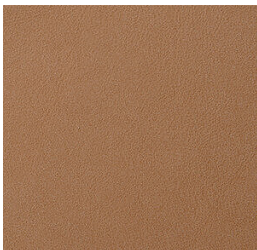
Tobacco stained ash

Metal

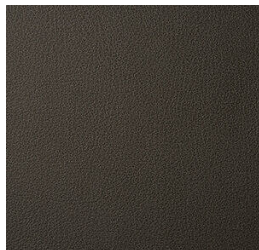


Satin nickel

Leather Cat.L1



Fard amber 2343



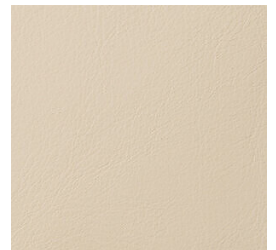
Fard anthracite 2379



Fard clay 2303



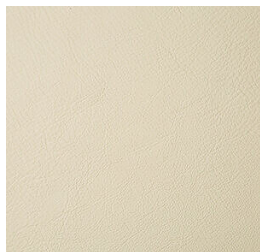
Fard deer 2346



Fard ecru 2304



Fard loden green 2357



Fard milk 2300



Fard nude 2334



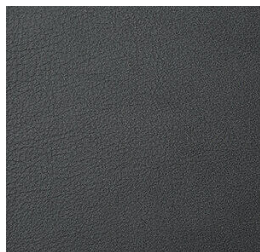
Fard otter 2348



Fard silt 2324



Fard silver 2302



Fard slate 2386



Fard tan 2305