

Venere

Carlo Colombo
2013



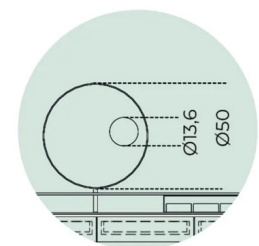
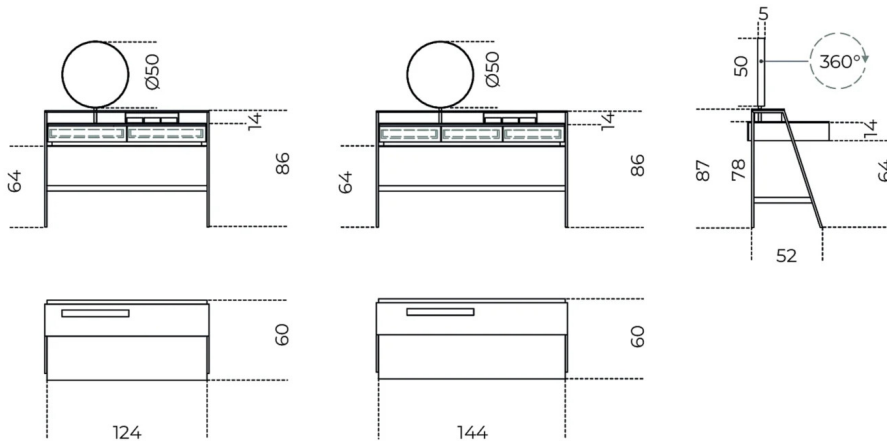
Vanity wooden desk covered by 6mm tempered glass and 10mm tempered shelf, both painted as per samples in the bright or satin version. Rotating (360°) double face mirror diam. 50cm. Magnifying mirrored insert, on request. Chestnut with "fabric" touch effect lacquered drawers. Burnished lacquered metal structure. Small boxes in metal covered by suede Sand 012. The mirror will be on the left side.

Cm (L x P x H)

124 x 60 x 86
144 x 60 x 86
124 x 60 x 136
144 x 60 x 136

Inches (L x P x H)

49 x 23³/₄ x 34
56³/₄ x 23³/₄ x 34
49 x 23³/₄ x 53³/₄
56³/₄ x 23³/₄ x 53³/₄



Specchio ingranditore
Magnifying mirror

Finishes

Glass



Bright white



Satin white



Bright blue-grey



Satin blue-grey



Bright cadet blue



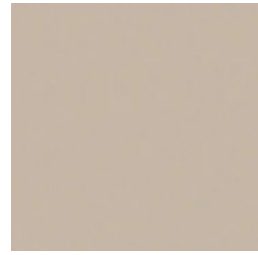
Satin cadet blue



Bright cement



Satin cement



Bright champagne



Satin champagne



Bright rose powder



Satin rose powder



Bright taupe



Satin taupe



Bright dark grey



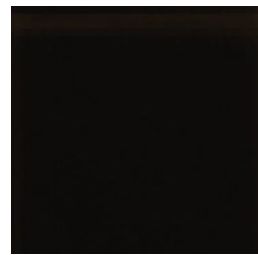
Satin dark grey



Bright liquorice



Satin liquorice



Bright black



Satin black



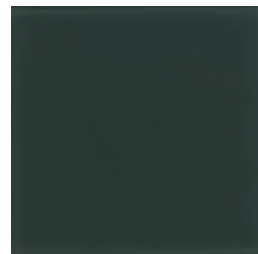
Bright olive



Satin olive



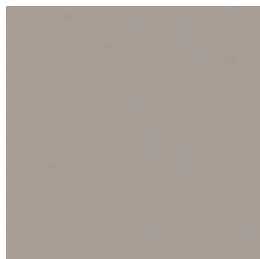
Mirror



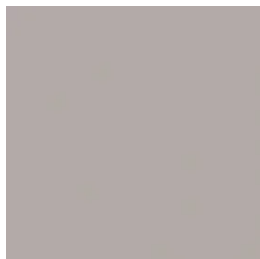
Bright green-grey



Satin green-grey



Bright mink



Satin mink

Wood



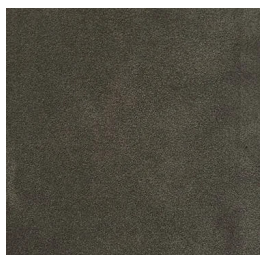
Chestnut fabric touch
effect

Metal



Burnished lacquered

Leather Cat.L1



Suede sand 012